



SHINING 3D®



SHINING 3D®

EinScan-S™

Desktop 3D Scanner





Scan-Design-Print

We provide an integrated solution for you...

- ✓ High Accuracy
- ✓ Color Texture Scan
- ✓ Two Scan Options
- ✓ Scan Small to Large
- ✓ Faster than Ever
- ✓ Simple to Use
- ✓ Ready to Print

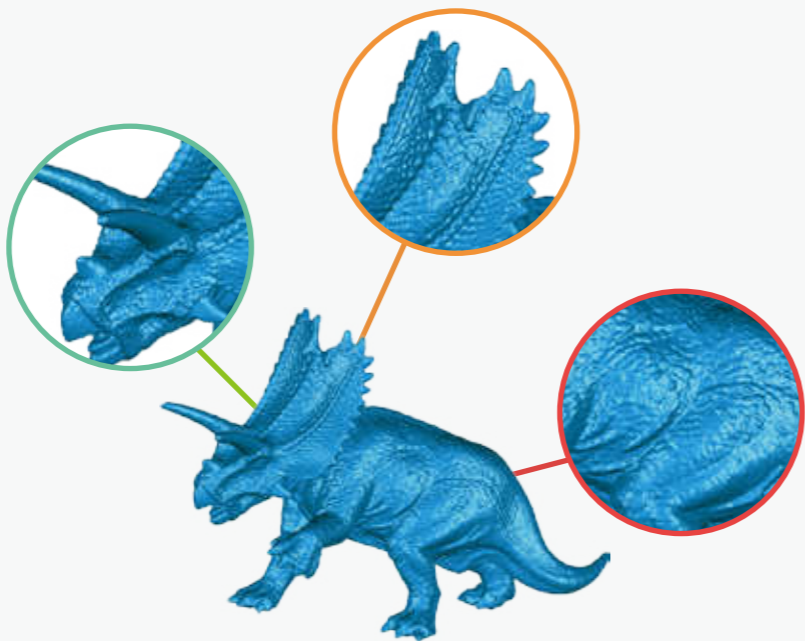


Fast, Accurate, Affordable



High Accuracy

EinScan-S 3D scanner utilizes white light 3D scanning technology, features in low noise, superior characteristics.



Color Texture Scan

EinScan-S can capture geometric shape, color and texture information, which can be applied in computer graphics and animation, games, digital archiving, prototyping and color 3D printing, etc..





Two Scan Options

Equipped with automatic scan and free scan mode, EinScan-S is capable of scanning for objects small and large. Two scan modes can be switched from each other freely.



Automatic scan



Free scan



Scan Small to Large

EinScan-S is capable of scanning for objects small and large. The maximum scanning size is 200*200*200mm under automatic scan mode; 700 mm *700 mm *700mm under free scan mode.



Faster than Ever

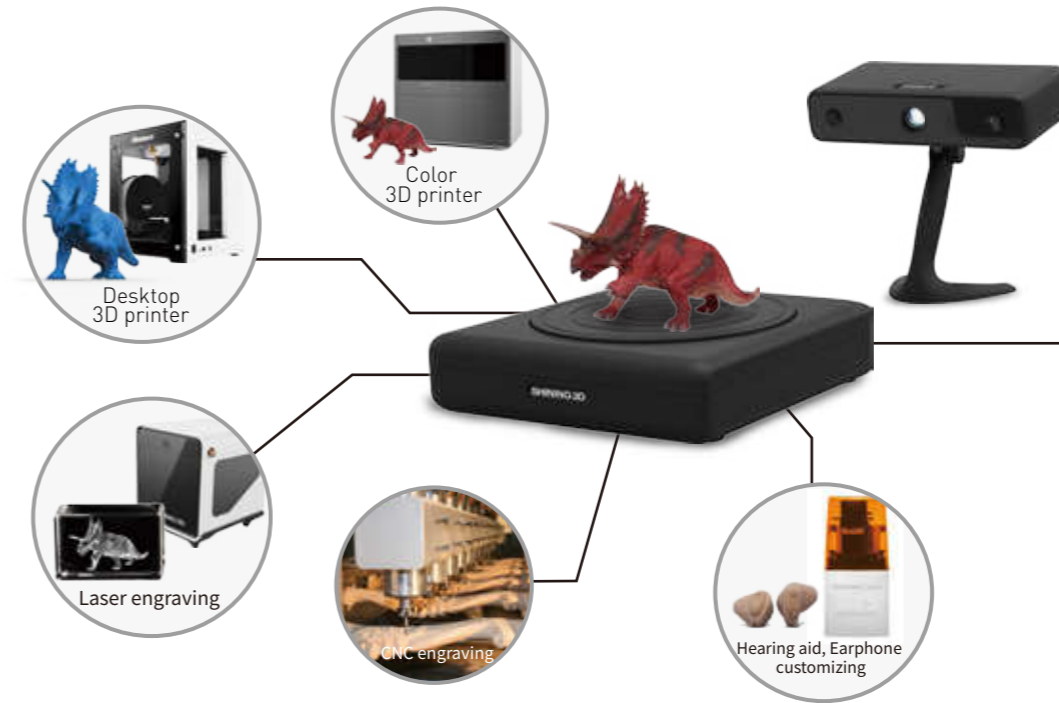
Automatic scan takes less than 3 minutes to complete one circle, three times faster than similar desktop 3D scanner in the market with the turntable scans.



EinScan-S



Laser Digitizer



Simple to Use

EinScan-S 3D scanner allows anyone to scan. All you have to do is “click” and the scan process will be done automatically to turn objects into 3D models on computer. International standard file formats, .stl, .obj, it can be applied in many 3D applications.



Maya



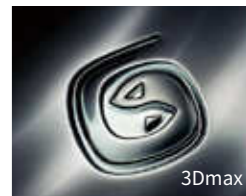
Zbrush



Geomagic



Proe



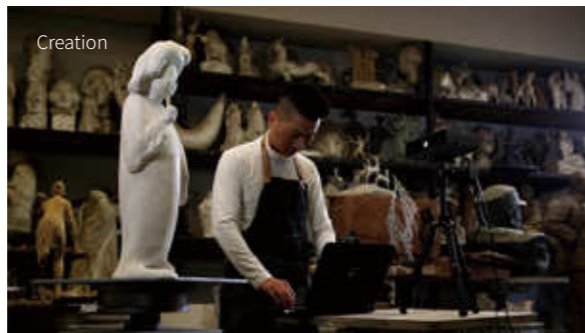
3Dmax



Design



Consumer



Creation



Ready to Print

All the digital models scanned by EinScan are ready to be printed in 3D printer without any editing work.



Eye Safety Lighting

White light source, safer compared to laser scanning, harmless to eyes.

Specification

Model	EinScan-S
Accuracy	≤0.1mm (single range)
Maximum scan volume	Automatic scan :200 mm *200 mm *200mm Free scan: 700 mm *700 mm *700mm
Scan speed Free scan	Automatic scan:<3mins Free scan:<10s (single range)
Point distance(mm)	0.17mm ~0.2mm
Alignment method	Automatic alignment/Manual alignment
Scan mode	Automatic scan/Free scan
Printing support	Yes
Resolution	1.3 Mega pixel
Light source	White light
Scanner dimension	without package: scanner head size 246*126*60mm/ turn table 246*260*65mm with packing: 630*400*180mm
Weight	without package: 3.5kg with packing: 6.6kg
Power consumption	50w
AC input	100V~230V
Single scan range	200*150mm
File Format	STL, ASC, OBJ

System Support

Win7 64 Bit, Win8 64 Bit

Computer requirements

Discrete graphics, minimum two USB2.0 interfaces; the USB of equipment should be connected into USB 2.0 interface.VGA cable should be connected into discrete graphics.

Screen resolution no less than 1024*800.

Discrete graphics memory:

Discrete graphics memory: at least 2G

Memory card:

Memory card: at least 8G

Hard disk:

Hard disk: at least 500G

